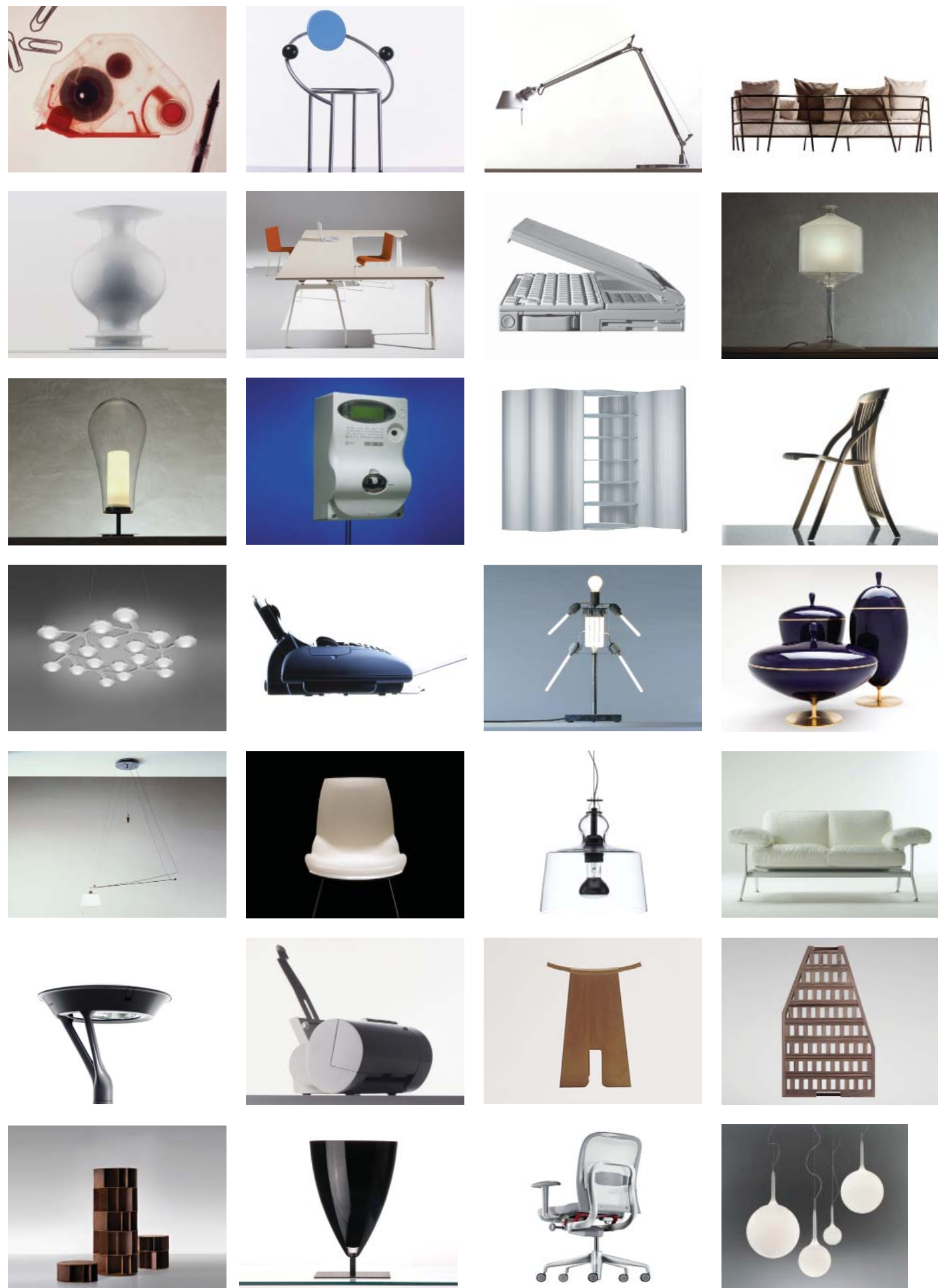
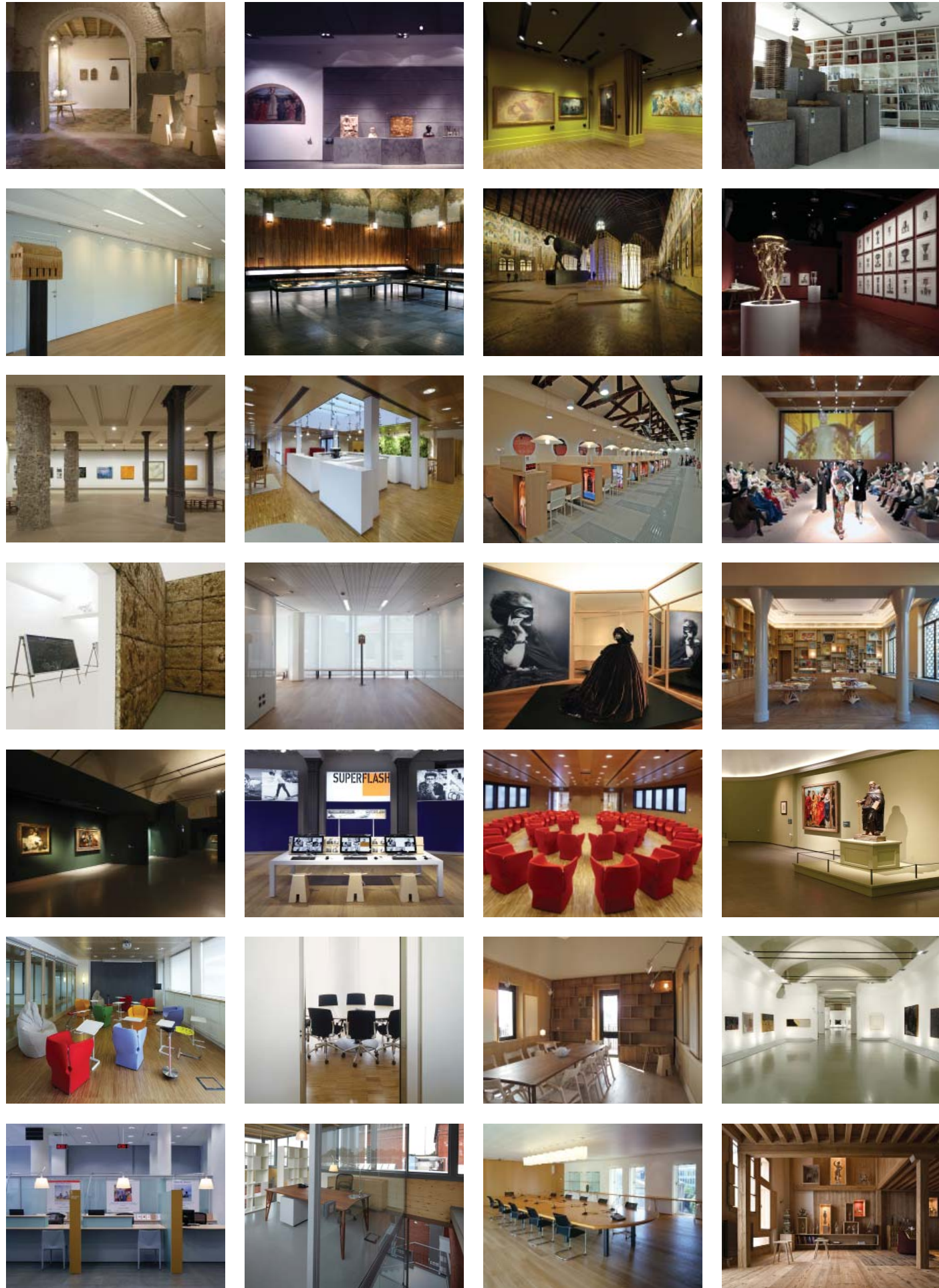


MICHELE DE LUCCHI



Michele De Lucchi was born in 1951 in Ferrara and graduated in architecture in Florence. During the period of radical and experimental architecture he was a prominent figure in movements like Cavart, Alchymia and Memphis. De Lucchi has designed furniture for the most known Italian and European companies. For Olivetti he has been Director of Design from 1992 to 2002 and he developed experimental projects for Compaq Computers, Philips, Siemens and Vitra. He designed and restored buildings in Japan, in Germany and in Switzerland and in Italy for Enel, Olivetti, Piaggio, Poste Italiane, Telecom Italia. In 1999 he has been appointed to renovate some of ENEL's (the Italian Electricity Company) power plants. For Deutsche Bank, Deutsche Bundesbahn, Enel, Poste Italiane, Telecom Italia, Hera, Intesa Sanpaolo and at other Italian and foreign banks he has collaborated to the evolution of the corporate image, introducing technical and aesthetic innovation into the working environments. He planned buildings for museums as Triennale di Milano, Palazzo delle Esposizioni di Roma and Neues Museum Berlin. In the last years he developed many architectural projects for private and public client in Georgia, as Ministry of Internal Affairs and the bridge of Peace in Tbilisi, recently unveiled. His professional work has always gone side-by-side with a personal exploration of architecture, design, technology and crafts. In 1990 he founded Produzione Privata, a small-scale company concern through which Michele De Lucchi designs products that are made using artisan techniques and crafts. From 2004 he has been sculpturing little wooden houses with the chain saw to create the essentiality of the architectural style. In 2003 the Centre Georges Pompidou in Paris has acquired a considerable number of his works. Selections of his products are exhibited in the most important design Museums in Europe, United States and Japan.

THE STUDIO



Architect Michele De Lucchi srl is an architectural and design practice founded in the 1980's that supports the research and experimental creativity of Michele De Lucchi, one of Italy's most prominent architects. It considers each professional assignment a fresh opportunity to explore and realize new concepts that are founded on a wide range of professional and international experiences. Working closely with both public and private institutions aMDL it confronts and seeks solutions for our industry's, our culture, our crafts, our natural environment that can have a positive benefit on contemporary society today.

The studio is based in the centre of Milan in a converted 4 storey storage building which comprises a basement for archive, garage and model making, administration offices and staff kitchen, two floors of open studio space, a top floor for the personal studio of Michele De Lucchi and meeting/presentation area. There are presently 35 staff, that includes architects, graphic designers, product designers, technical support staff, administrators, model makers

The studio can deliver full architectural and interior projects from conception, preliminary, definitive and executive design phases including the supervision of the works. Having undertaken numerous international assignments aMDL is qualified and sensitive to working in different cultures and construction markets. It has developed close relationships with leading consultants in the fields of engineering, environmental and landscape design and since 2012 all projects are organised in compliance with its ISO certification parameters.

aMDL PROJECT DIRECTORS:



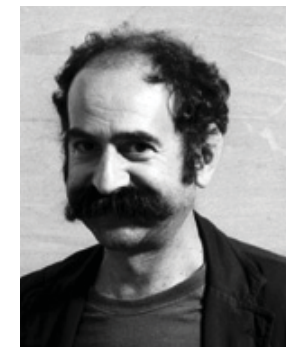
Nicholas Bewick



Alberto Bianchi



Giovanna Latis



Angelo Micheli

THE TEAM



Principal:

Arch. MICHELE DE LUCCHI

Team Directors:

Arch. NICHOLAS BEWICK
Arch. ALBERTO BIANCHI
Arch. GIOVANNA LATIS
Arch. ANGELO MICHELI

Architects:

Arch. FILIPPO MEDA
Arch. SIMONA AGABIO
Arch. SILVIA FIGINI
Arch. MARCELLO BIFFI
Arch. LAIZA TONALI
Arch. ALESSANDRO GHIRINGHELLI
Arch. MATTEO DEL MARCO
Arch. ALESSANDRA DE LEONARDIS
Arch. AGNIESZKA DREWS
Arch. AGNIESZKA BURDAJEVICZ
Arch. VITTORIO ROMANO
Arch. GRETA CORBANI
Arch. GIORGIO TRAVERSO
Arch. SARA CASARTELLI

Graphic designers:

MERCEDES JEAN RUIZ
MADDALENA MOLTENI

Industrial and Furniture Designers:

GRETA ROSSET
DAVIDE ANGELI
ALBERTO NASON
FEDERICO RIVA

Model maker:

FRANCESCO FACCIN

Archive team:

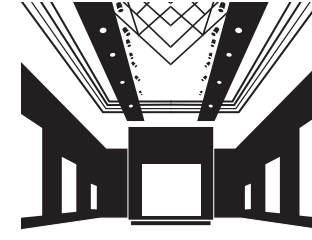
MARA CORRADI: responsible
MARGHERITA BAETTA: assistant

Employees:

MONICA DEL TORCHIO: Michele De Lucchi personal assistant and business development Director
ANNA TELESCA: administration Manager
PAOLA PEDRETTI: administration Manager assistant
CHIARA CASTELLANI: Michele De Lucchi private secretary
CINZIA CONTI: practice secretary



WORKPLACE AND FINANCIAL SERVICES ENVIROMENTS



Michele De Lucchi and his studio have a long experience in the design development of Workplace, Service environments and Interior design.

This began with the collaboration with Ettore Sottsass and the design of office furniture systems for Olivetti Synthesis and continues today with the specific development of projects for the Banking and Service sectors.

Key projects and milestones include the wining design in 1990 for the new network of Deutsche Bank's retail and Private Banking environments in Germany, which was followed by the another important project for the design of Deutsche Bahn's railway station service centres.

These experiences led to the commission to completely redesign the identity and interior of Italy's Post Offices. This was followed by the work that continues today for Intesa Sanpaolo, Italy' biggest bank, where aMDL has designed the present retail bank interior system, the Super Flash internet banks, the principal office and representational spaces in Italy, New York and London.

Recently aMDL has designed and overseen the transformation of the part of Intesa's Milan Headquarters into on of the cities most important art galleries.

These and many other projects are all closely linked to a comprehensive integrated design process and activity which includes the communication design strategy and the specific design of furniture and lighting systems that represent the identity and character of the organisation.

aMDL and its team have been a prominent thinkers and innovators in the design of the workplace that includes research and experimental projects for Vitra, desk systems for Unifor and Haworth, and the present work, in collaboration with Renzo Piano, for the complete interior and furniture design of Banca Intesa's new high rise headquarters in Turin.